



Cyclone 7000 Low Air Loss therapy:

The Cyclone 7000 is a multi-zoned low airloss mattress replacement system.

Skin integrity and Patient comfort can be severely compromised if excessive moisture is allowed to build up between the Patient and the support surface.

Low air loss helps create an osmotic gradient to promote movement of vapour away from the skin keeping the Patient dry and comfortable.

The gentle circulation of air within the mattress cavity helps in the reduction of humidity and enhances Patient comfort.

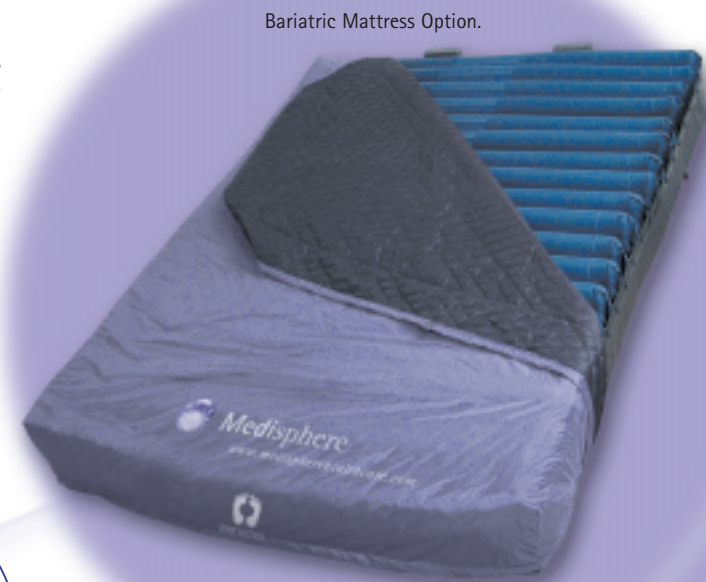
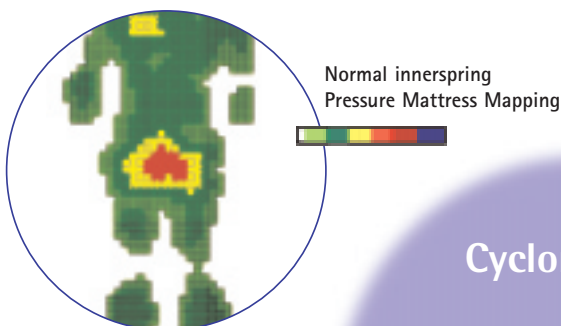
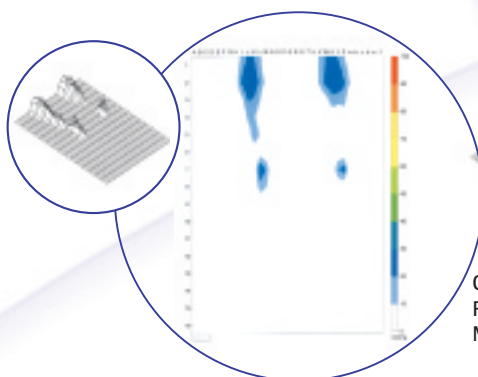
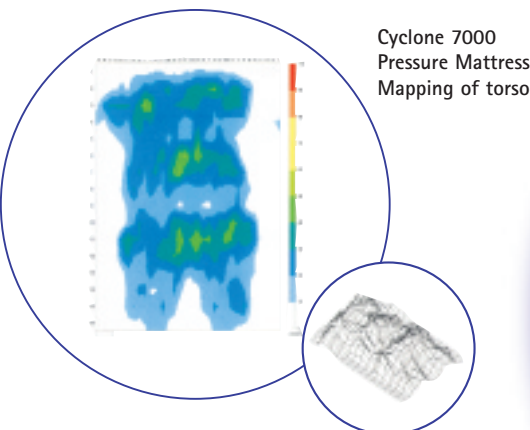
- Provides continuous air flow reducing the risk of maceration.
- User friendly electronics allows the care giver to adjust for individual Patient comfort.
- Rapid inflation: inflates in 25 seconds for instant Patient placement.
- The controller unit is extremely compact and lightweight.
- Convenient moulded retractable hooks designed to fit most beds.

Advanced Alarm Features

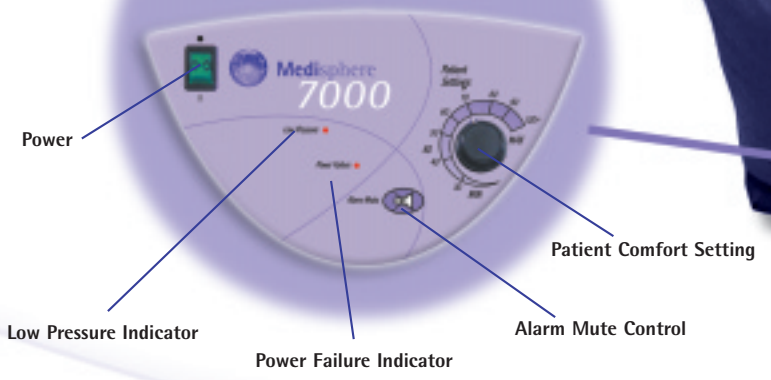
- Visual low pressure indicator.
- Visual Et Audible Power failure.
- Audible alarm mute button.
- Integrated battery backup for alarms.

Mattress

- The Deep Air Cell cushions allow greater distribution of Patient weight, lowering interface pressures, improving comfort levels.
- Low Air Loss is delivered though all 20 air cells of the support surface.
- Large single snaplock quick release coupling, which can be disconnected using only one hand for rapid mattress deflation.



Cyclone 7000



The mattress cover is a multi-stretch material that is moisture vapour permeable, helping to reduce sheer friction and maceration.



The Cyclone 7000 Mattress has a removable bacteriostatic top cover that is easily cleaned between patients or removed completely for laundering.



20 individually replaceable PU (polyurethane) air cell construction for long lasting durability.



Security. The mattress is fitted with adjustable straps to ensure secure fittings, to the bed frame.



As storage space at hospitals or equipment loan stores is at a premium the Cyclone 7000 is designed to take up minimum space when the system is not in use.



The therapeutic support surface is lightweight and conveniently rolls into its own carrying case