

Tradewind 3000 Alternating Pressure Mattress System

Active Pressure Relief specifically designed for preventing and managing pressure sores and enhanced comfort for Patients assessed at High Risk of developing Pressure Sores, or with existing tissue damage.

Deep Air Cell cushion design for Enhanced Comfort & Control:

The Tradewind 3000 offers Patients a comfortable & relaxing dynamic support surface due to its Deep Cushion design, providing effective pressure relief by gently inflating and deflating the individual 8" deep air cell cushions, sequentially over a ten minute cycle. The deep cushion air cell mattress design allows greater immersion of the Patient into the mattress, keeping interface pressures low by spreading the load over a larger area. Gentle inflation and deflation of the air cells allows oxygenation and nutrition of the tissue to occur, assisting in the prevention of breakdown, thereby enhancing healing.

The Controller

Compact Unobtrusive Pump Design:

- Convenient moulded retractable carrying handle.
- Convenient moulded retractable hanging hooks designed to fit most beds.
- Simple controls, manual comfort control setting with convenient Patient weight guide for optimum Patient comfort and support.
- Snap fit tube couplings for secure connection and to prevent accidental disconnection of the mattress tubing from the pump.
- Minimal noise and vibration levels.
- Tough durable casing.

Advanced operator features:

- Selectable Dynamic / Static Modes.
- Pressure control: Adjustable to Patient weight / Adjustable to Patient position.
- Sophisticated Alarm Indicators: Audible and visual power fail alarm / Visual low pressure alert indicator / Integral battery backup for alarms / Power restored audible alarm with manual reset.
- Transport mode facility: this facility is easy to activate by simply connecting the mattress snap lock couplings together, this will allow the mattress to remain inflated for up to ten hours.

When activated this mode provides the Patient with total support at low pressures and allows the Patient to be moved easily, plus provides an additional security backup in the case of a power failure.

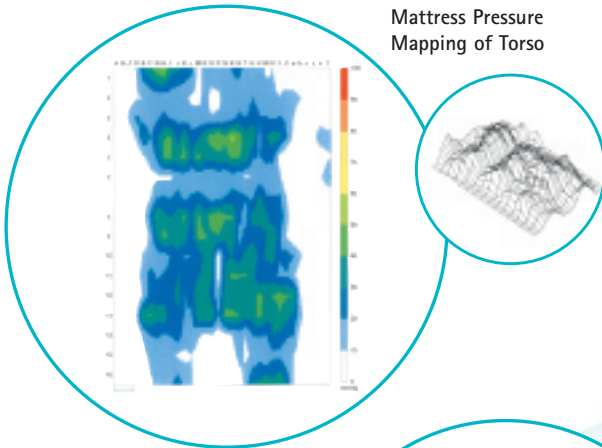
Tradewind 3000 Alternating Pressure Mattress System

- 20 individually replaceable PU (polyurethane) air cell construction for long lasting durability, which conforms to the contours of the body ensuring effective Patient support and comfort.
- The cover is vapour permeable, ultra two way stretch, fire retardant, soft but robust and is water resistant.

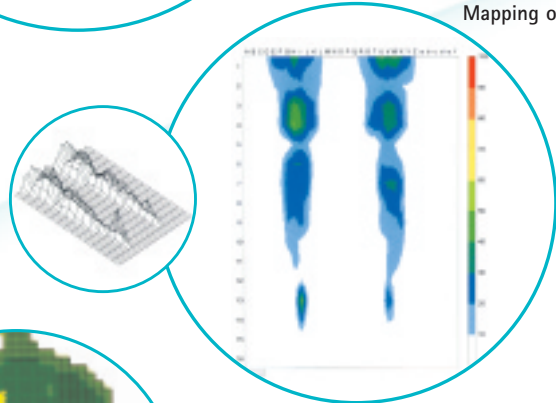
Infection Control

- The Tradewind 3000 Mattress Replacement system has a bacteriostatic top cover. The mattress and pump are easily cleaned and laundered according to Department of Health guideline HSG (95) 18.

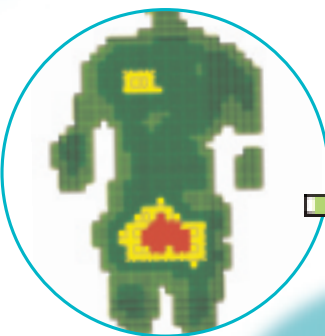
Tradewind 3000 Mattress Pressure Mapping of Torso



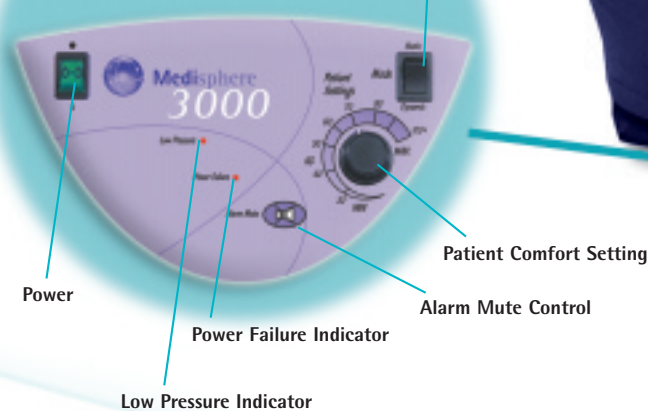
Tradewind 3000 Mattress Pressure Mapping of Heels



Normal innerspring Mattress Pressure Mapping



Tradewind 3000



Fitted with quick release couplings, which can be interconnected, to equalise the mattress pressure, and keep the mattress inflated during a power failure or when the pump is not required.

The mattress cover is a multi-stretch material that is moisture vapour permeable, helping to reduce sheer friction and maceration. The Tradewind 3000 Mattress has a removable bacteriostatic top cover that is easily cleaned between Patients or removed completely for laundering.

20 individually replaceable PU (polyurethane) air cell construction for long lasting durability.

Fitted with a quick release CPR facility for fast deflation of the entire mattress. The CPR can be activated with a single handed release operation deflating the torso section in less than 20 seconds.

Security.
The mattress is fitted with adjustable straps to ensure secure fittings, to the bed frame.

Cost Effectiveness.
The Modular design and construction of the Tradewind 3000 ensures all cells can be individually replaced making it an extremely cost effective option.

Compact For Storage
As storage space at hospitals or equipment loan stores is at a premium the Tradewind 3000 is designed to take up minimum space when the system is not in use.

The therapeutic support surface is lightweight and conveniently rolls into its own carrying case.

